

ANNUAL REPORT 2007-08

Community Clean Water Institute

Community Clean Water Institute is dedicated to promoting and protecting clean water and public health by identifying water pollution, advocating for sound water policies, and providing information to the public.

Board of Directors

Nels Worden
Judith Olney
Don Frank
Lynn Hamilton
Margaret Howe
Sarah Shaeffer
Robert Pennington

Staff

Terrance Fleming
Program Director
Kandis Gilmore
Program Assistant
Truston Davis
Special Projects
Consultant
Art Hasson
Intern

Technical Advisors

Nels Worden
Stephen Fuller-Rowell

CCWI moved!
Our new address is
500 N. Main St. Ste 110
Sebastopol, CA 95472
707-824-4370
www.ccwi.org
info@ccwi.org



Dear Friends,

Sonoma County is green again! The first rains of the wet season have come and gone and now green grasses blanket our open foothills and lowland areas. The streams, many of which were made up of stagnant pools or were completely dry just a couple months ago, are flowing once again. It is truly amazing what nature can do with just a little rain.

Still, dry times are upon us and it wasn't long ago Northern California's horizons were engulfed by smoke from record high fire outbreaks and alarmingly low water levels in our streams. Some of our volunteer monitors have reported dry creek beds during months when there's normally significant flow, reminders of the drought lingering upon us.

Luckily there are inspiring folks out there who want to ensure that the little water available to us these days is being used appropriately and fairly. Our volunteer water quality monitors have been keeping a close eye on our precious waterways for nearly eight years. Now, all of this water quality data is available to the public with our new online data base system, which can be found at our website www.ccwi.org. We would like to express our thanks to our volunteers and Nels Worden for making this online database system possible!

We have a new Program Director here at CCWI! Terrance Fleming, who received a degree in Environmental Studies and Biology from Sonoma State University, brings experience working with a number of local grassroots non-profits as well as a passion to protect the natural resources of our county. We would like to thank Robert Pennington for all his hard work and devotion and we are pleased to have him as a member of the CCWI Board of Directors.

CCWI would like to thank the Public Health Institute for a generous grant, through their Public Health Trust program, to develop and expand our citizen water quality and instream flow monitoring programs. Their support allowed us to purchase a whole new set of monitoring equipment and update our other set. We would like to invite you to become a volunteer monitor, but if this isn't possible right now, please consider making a generous contribution to CCWI in support of our programs. We need your help to continue to monitor and protect water quality and resources in the magnificent waterways and watersheds of Sonoma County. Please come visit us at our new office, which is downstairs from the Methodist Church across from the Safeway- 500 North Main St. Sebastopol.

Thank you,

Nels Worden, President of the Board of Directors
Terrance Fleming, Program Director
Kandis Gilmore, Program Assistant



Volunteer monitor
Steve Greek with one
of our new equipment
sets in our new office!

2007-2008 Pollution Alerts

Turbidity over 100 NTU:

Blucher Creek
Cheney Gulch
Salmon Creek
Dutch Bill Creek
Americano Creek
Green Valley Creek
Mark West Creek
Russian River
Laguna De Santa Rosa

Conductivity over 500uS:

Colgan Creek
Laguna De Santa Rosa
Mark West Creek
Blucher Creek
Russian River
Santa Rosa Creek
Americano Creek
Dutch Bill Creek
Green Valley Creek
Sonoma Creek
Cheney Gulch

Nitrate-N over 1.0 mg/L:

Salmon Creek
Americano Creek
Atascadero Creek
Mark West Creek
Laguna De Santa Rosa
Colgan Creek
Cheney Gulch
Dutch Bill Creek
Blucher Creek
Sebastopol Creek

Total Phosphorous over 0.1 mg/L:

Salmon Creek
Americano Creek
Mark West Creek
Laguna De Santa Rosa
Colgan Creek
Dutch Bill Creek
Green Valley Creek
Blucher Creek
Sebastopol Creek
Santa Rosa Creek

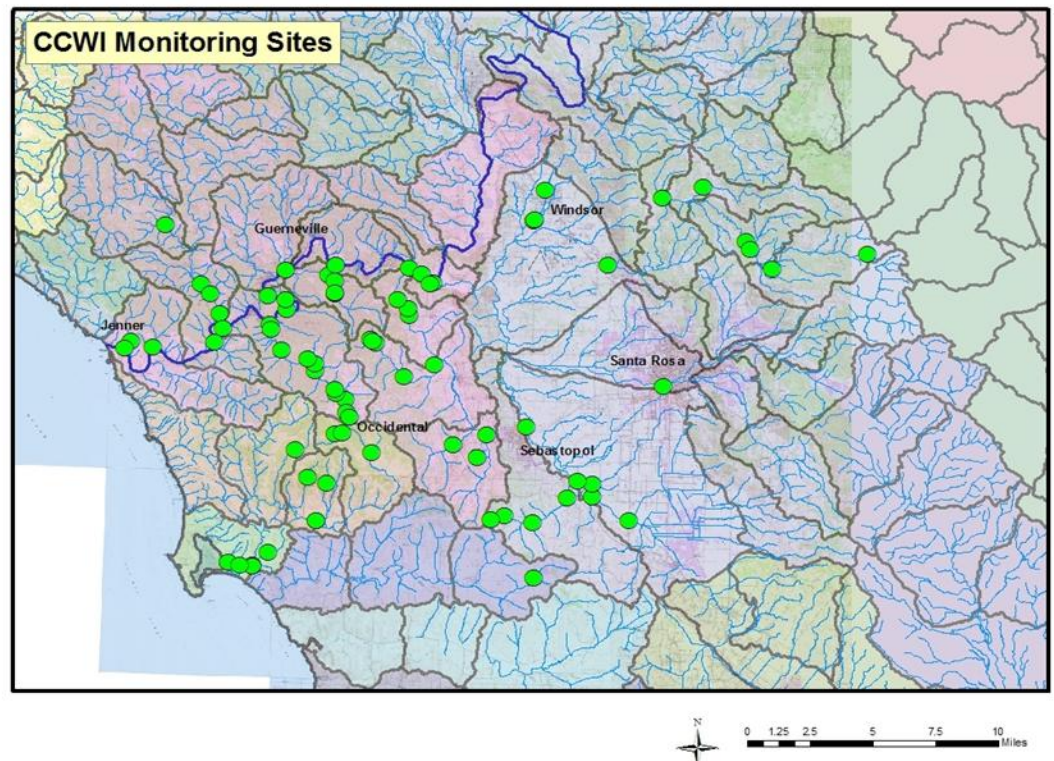
Water Quality in 2007 & 2008

A preliminary look at 2007-08 data gathered by our volunteers suggests possible problems in Atascadero-Green Valley, Salmon, Windsor, Mark West, Americano, Dutch Bill, Cheney Gulch, Blucher, Colgan, Sonoma, Sebastopol, and of course the Laguna de Santa Rosa. Check out the sidebar at left to see a list of streams violating the North Coast Basin Plan Objectives at least once during the year (exception: Nitrate level in the basin plan is 10 mg/L, however levels above 1 mg/L are used by the USEPA).

CCWI submitted our 2004-2007 data to the State Water Resources Control Board for their assessment of which streams should be included as impaired on the 303-d list. Our 2004-2006 dataset is the largest submitted within the Russian River and Salmon Creek Watersheds. The Clean Water Act requires the State to develop total maximum daily loads (TMDLs) of pollutants for streams listed as impaired, an important step towards controlling non-point source water pollution.

We've been collecting water quality data since our inception in 2001 and it's all available through our relational database program, which can be found on our website. CCWI also has an email service called 'Alert 2.0,' which keeps the interested public informed of our programs, local political updates, and data from our watersheds. Sign up for 'Alert H2O' at www.ccwi.org!

Community Clean Water Institute Volunteer Monitoring Sites 2007-08



Thank you to our 2007 & 2008 financial supporters:

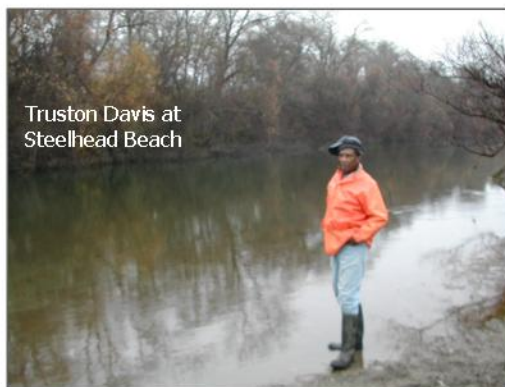
Public Health Trust
Rose Foundation
American Water Co.

Sonoma County Fish & Wildlife Commission
Tides Foundation Grassroots Wildlands Fund
Patagonia and Individual Donors

Citizen Monitoring Updates

In the last two years we added several new watersheds to our volunteer monitoring program, including Sheephouse, Sonoma, and Blucher Creek. We began monitoring Sheephouse Creek in order to gather baseline water quality data due to concerns about proposed development in the area. CCWI responded to a complaint in Kenwood where a resident witnessed harmful alterations of the stream bed and bank of Sonoma Creek adjacent to a local vineyard. We recorded high electrical conductivity levels on the initial visits and will continue to test. Our preliminary analysis of Blucher Creek found high phosphate levels, which we believe to be partially caused by the unique geology of this watershed.

CCWI collaborated with the Laguna de Santa Rosa Foundation to conduct the water quality monitoring section of a fish survey in the Laguna.



Truston Davis at Steelhead Beach

In 2008, CCWI received grants from Patagonia and the Rose Foundation to implement a water quality monitoring and outreach program in the Lower Russian River Watershed. The Russian River watershed basin provides drinking water to 600,000 local residents and is home to three federally listed species of salmon. Our consultant, Truston Davis, is helping to coordinate this effort to educate and involve local communities in watershed stewardship.

Citizen Water Monitors

Dutch Bill Creek

Tom Austin
William Poole
Art Hasson
Russian River/Austin Creek
Dennis Beall
Robert Feuer
John Pendergraft
Mark West Creek
Val Mulcaire
Grif Okie
Truston B. Davis
Jefferey Shields
Laguna de Santa Rosa
Steve Greek
Gail Ohlander
Salmon Creek
Sarah Shaeffer
Lily Berkeley
Jenner Creek/ Estuary
Randy Barron

Blucher Creek

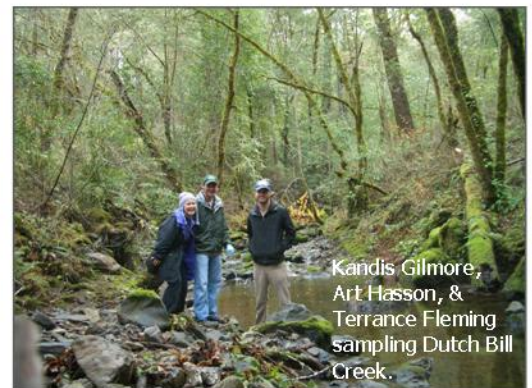
Ian Penn
Windsor Creek
Joshua Rubottom
Santa Rosa Creek
Paul Larkin
Pocket Canyon Creek
Doug Vincent
Green Valley Creek
Tom Veader
Bob Pakes
Larry Hanson
Bob Burke
Sonoma Creek
Keely Lucientes
Cheney Gulch
Joe Mortensen
Karey Kumli
ET Lode
Petaluma River/Adobe Creek
Theresa Fisher

Voices of the River

Thank you to Sonoma County Fish & Wildlife Commission and the Rose Foundation for supporting this year-long program. CCWI worked alongside West County Community Services to teach students from Monte Rio about water quality and fish habitat of local waterways. The three projects included organizing a creek clean up day and an art show presenting work by students from Monte Rio and Guerneville. The creek clean up day focused on Dutch Bill Creek and took place on Saturday, April 21, 2007. This was a part of a larger youth service movement called National and Global Youth Service Day.

Dutch Bill Creek

In March 2008 CCWI received a grant from the Fish and Wildlife Commission to perform winter storm monitoring in Dutch Bill Creek in order to learn about the changes in sediment and bacteria levels during significant storms. Storm monitoring can be particularly telling of the health of the watershed, as increased rains wash pollution from the watershed into the waterway. Our intensive sampling was bolstered by use of an automated sampler, which pulled samples every hour for 24 hours. When the first storm in November 2008 showed high levels of bacteria and turbidity, our volunteer Tom Austin wrote an article in the Russian River Monthly, generating interest in how the towns of Occidental and Camp Meeker may be contributing to this issue.



Kandis Gilmore, Art Hasson, & Terrance Fleming sampling Dutch Bill Creek.

2008 Financial Summary

Income:	Individual Donations	\$ 3,266
	Grants: Foundations	31,000
	Government	7,500
	Other	399
Total:		\$ 42,165

Expense:	Administration	\$ 12,191
	Fundraisings	4,200
	Programs	34,878
Total:		\$ 51,269

Community Clean Water Institute

2007 & 2008 Annual Report

Now available on-line: Interactive water quality database system! CCWI has been monitoring our waterways for eight years. This data is available to all on our website in an interactive, user-friendly database designed by CCWI board president Nels Worden. Gary Conley of National Oceanic and Atmospheric Administration praised the new system: "I found the formats very intuitive and easy to integrate with other data sources in a SWAMP (Surface Water Ambient Monitoring Program) compatible database." Visit www.ccwi.org and click on "data" to access this valuable new tool.

Do you have a pollution concern? CCWI will investigate water quality and water rights complaints on behalf of concerned citizens. Call our office right away when you see pollution, erosion, siltation, or sudden changes in your community waterways. Remember to document the problem with photos and/or samples. Contact CCWI at 707-824-4370, or info@ccwi.org.

Contribute to Community Clean Water Institute! Your tax deductible donation will support grassroots water quality monitoring that will identify pollution sources in your watershed. With your support CCWI can report water quality problems to the public and advocate for clean up, abatement and long term policy that supports healthy ecosystems and drinking water.

☐ \$25

☐ \$50

☐ \$100

☐ Other \$_____

Name: _____

Address: _____

Phone: _____ Email: _____

Make checks payable to: Community Clean Water Institute, 500 N. Main St. Suite 110, Sebastopol, CA 95472

Community Clean Water Institute
500 N. Main St, Suite 110
Sebastopol, CA 95472